



inspirage®

INSPIRAGE INTEGRATING SCM

Enable Resilience

Juli 2022

Geert Deschoolmeester

AGENDA

- Inspirage: Wer sind Sie?
- Inspirage:
- Was tun Sie?
- Was haben Sie getan?
- Inspirage:
- Supply chain resilience
- Reference cases : 2
- Wie weiter



ABOUT INSPIRAGE

750+

Employees

600+

Cloud Certified

10 years

average Oracle Application and/or SCM/ERP experience



Industry Verticals

Manufacturing
High Tech
Life Science
Oil & Gas
Consumer Goods
Retail & Distribution
Transportation & Logistics

60+

Countries

600+

ERP / SCM Customers

100+

Cloud ERP /
SCM Customers

6

Consecutive
Specialized Partner
of the Year Awards
(1 Global, 3 NA, 2 APAC)



Inspirage is
91%
on time and on budget



> 1 million

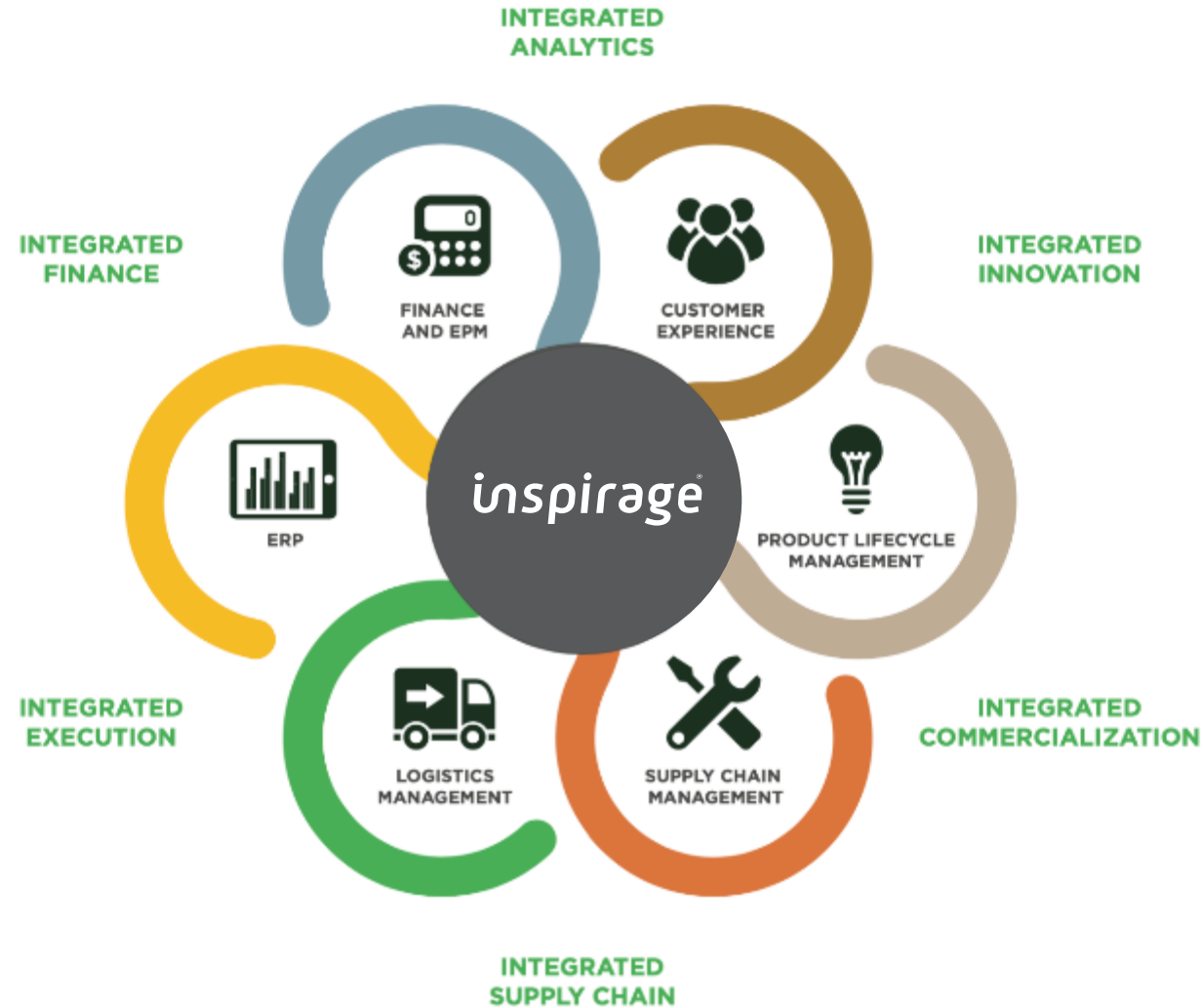
Cloud / Fusion project hours

Longest-serving Oracle Cloud
SCM co-development partner

INCLUDING:

NCR	Nadhi	Mecalac
WD	Ames	SGS
InfoBlox	Boar's Head	Panduit
Cohu	HWI	NBTY
Land O'Lakes	Lenovo	Tetra Pak

DIGITALLY ENABLING THE INTEGRATED ENTERPRISE



Integrate Information | Accelerate Innovation | Deliver Operational Excellence

600+

CUSTOMERS
LARGE, MEDIUM,
SMALL

WELL ENGAGED IN
THE DIGITAL
TRANSFORMATION

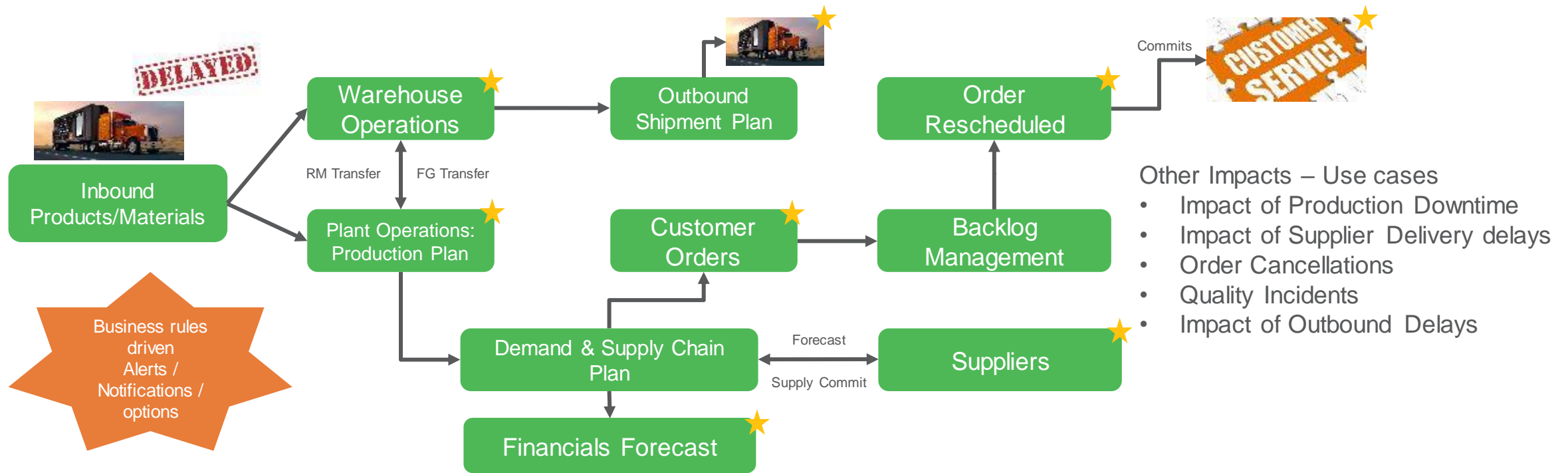
inspirage



BUILDING SUPPLY CHAIN RESILIENCE

Being Prepared for Continuous Disruption

BUSINESS EXPECTATIONS – INBOUND IMPACT



Control Tower that is Proactive and agile in every sense?

- Intuitive and Smart UX
- Provides Complete view of all Inflight Supply Chain Operations
- Business Rules driven Alerts and Notifications
- Planned v/s Actuals – Help you understand the underlying data and Optimize the same

Close loop Integration to TMS / WMS / Supply Chain Planning systems so we can Act?

- Plan Alternate routes?
- Release the warehouse for other activities?
- Re plan your production
- Re promise your customer commitments

Provide Drill down abilities to answer Where and What accurately?

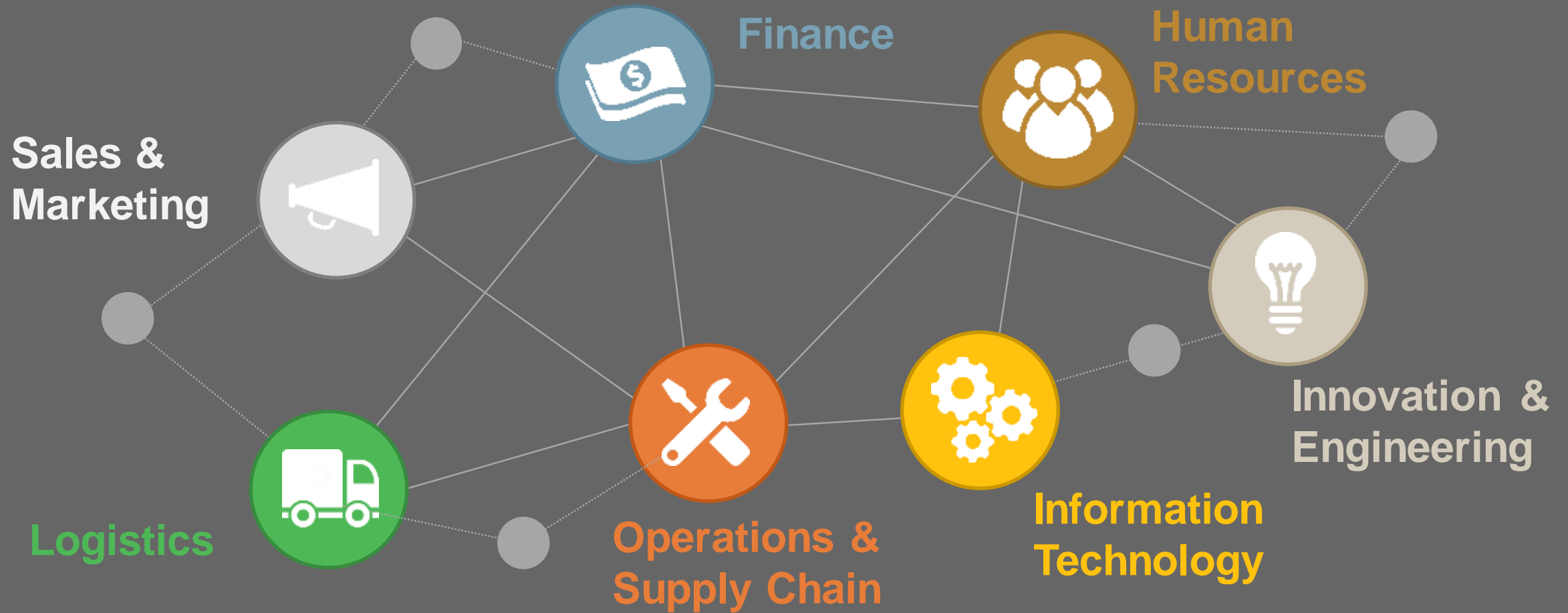
- What are we shipping? Product Information inside the container / Truck
- Which Customer Location should it go to?
- Are we on time?

Are we delayed?

- Why Delayed?
- Where is it stuck?
- What is the Planned ETA?
- What Orders/Customers/Warehouse will be Impacted?

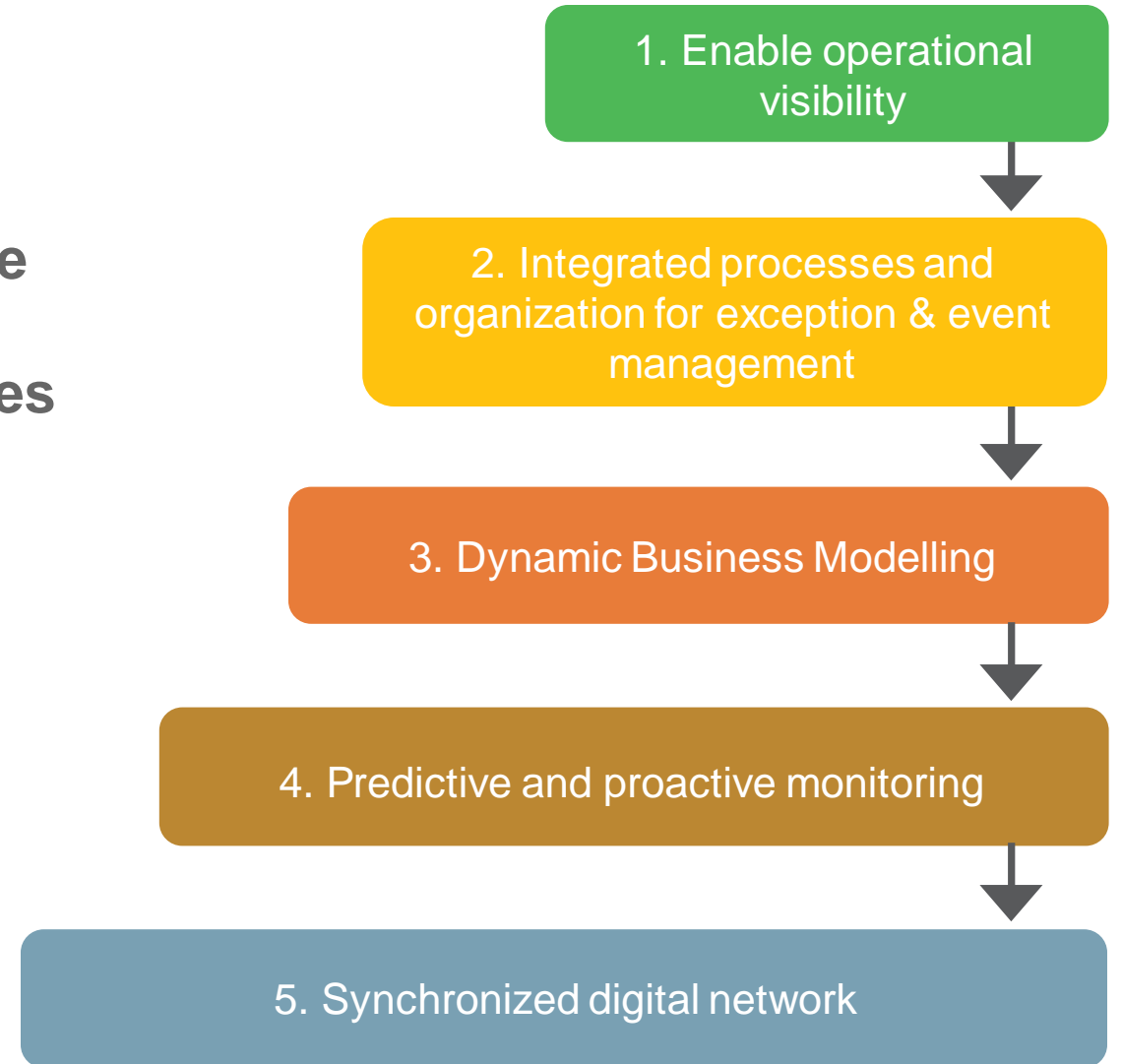
Accurate Frequent/Real time updates and Notifications

RESILIENCE REQUIRES INTEGRATED PROCESSES AND SYSTEMS



ENTERPRISE CONTROL TOWERS ENABLE RESILIENCE

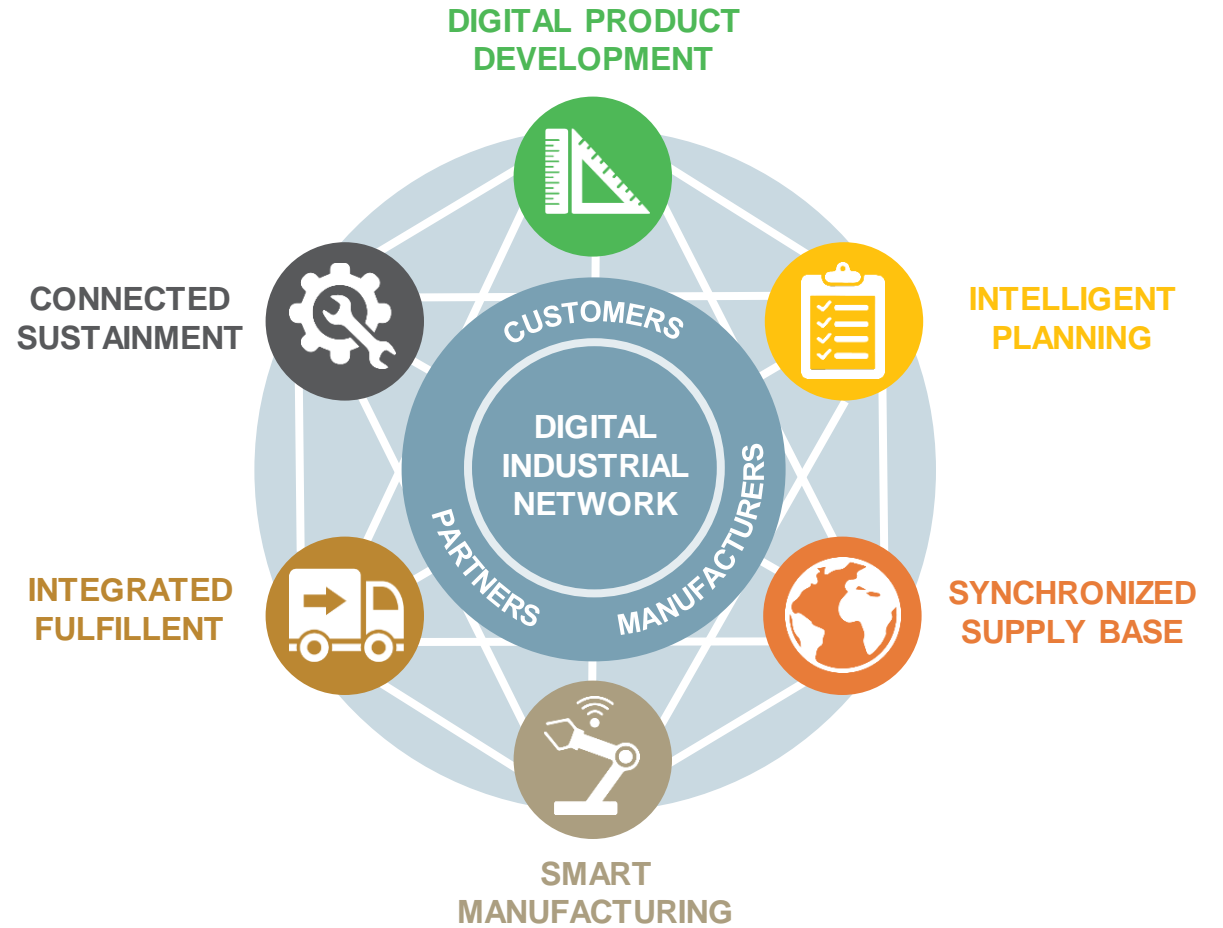
An Enterprise Control Tower is a hub with the required technology, organization and processes that aligns with strategic objectives to provide visibility, decision-making and execution based on real-time analytics.



STAGE 1: OPERATION VISIBILITY

VS.

STAGE 5: THE SYNCHRONIZED DIGITAL NETWORK



SCM VISIBILITY AND EXECUTION PLATFORM OVERALL HIGH-LEVEL ARCHITECTURE

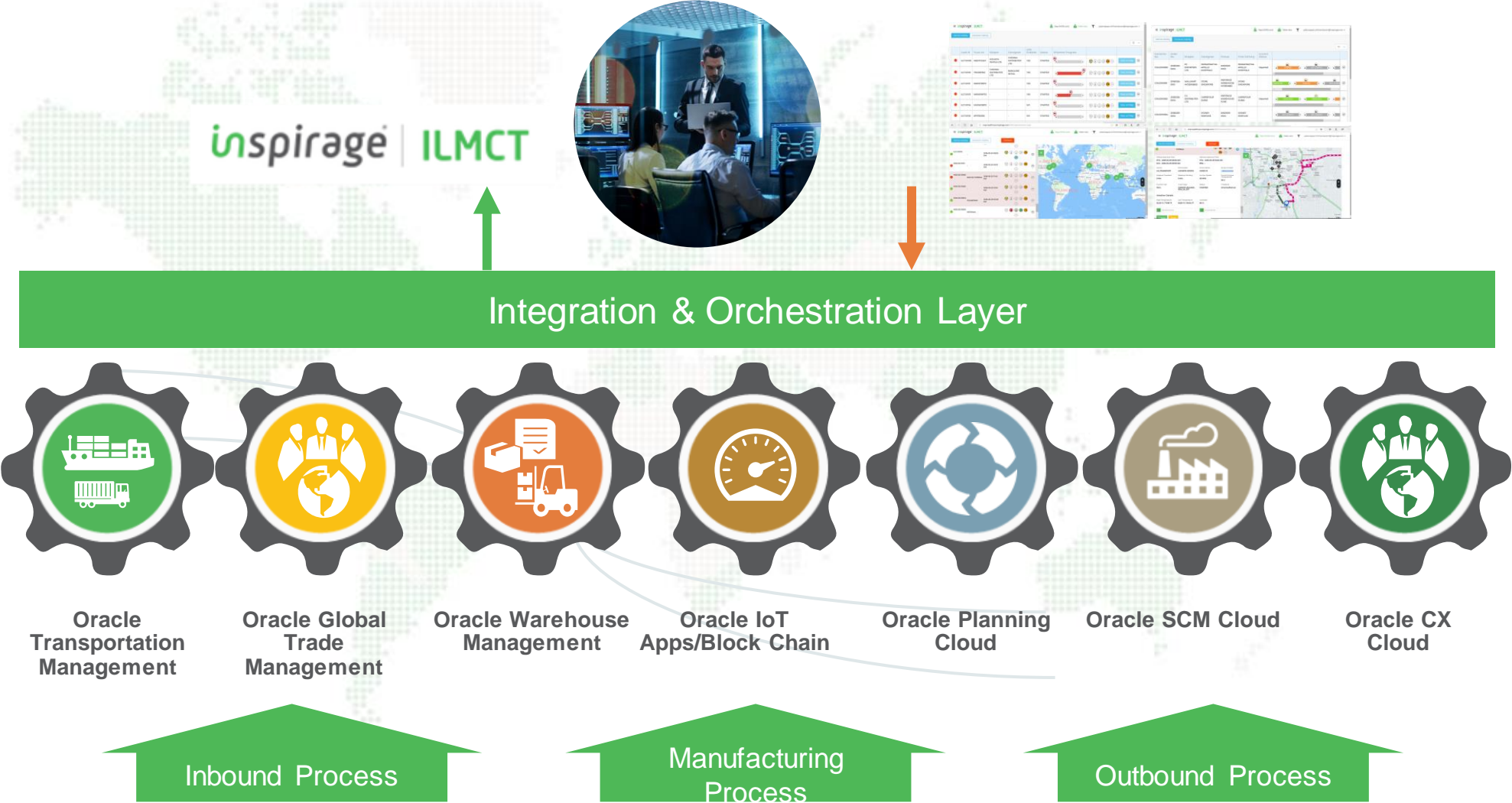


Control Tower
+ Organization for
Monitoring & Decision
Making

Process
Collaboration &
System Integration

Individual Systems

Individual
Processes



An integrated platform to connect functional silos and disparate systems to provide deeper insights, aid quicker decision making and deliver actionable intelligence.

Key Features & Benefits

- Enterprise visibility for cloud & hybrid landscapes (Oracle and non-Oracle)
- Advanced analytics, machine learning and self-service capabilities
- Scalable and extensible framework

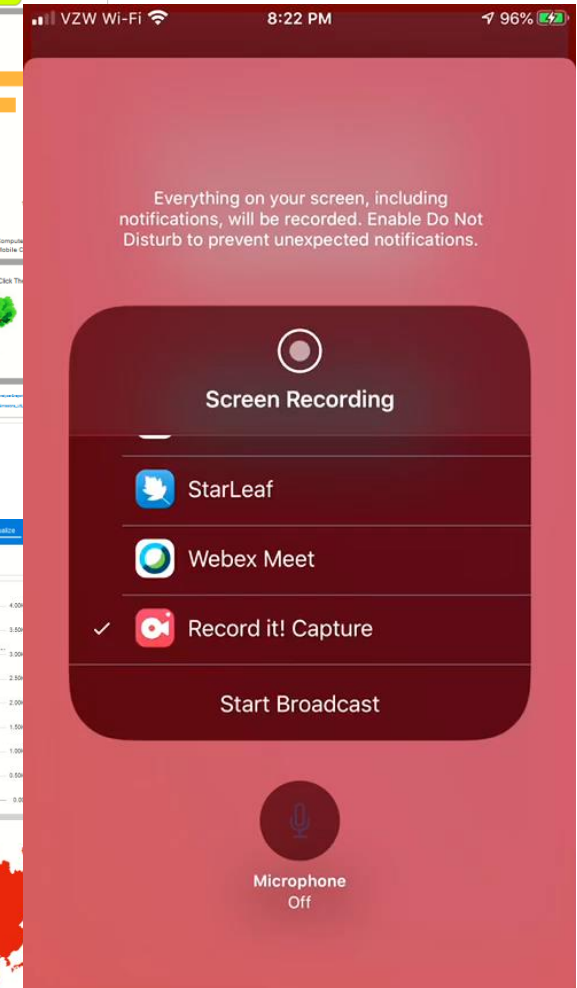
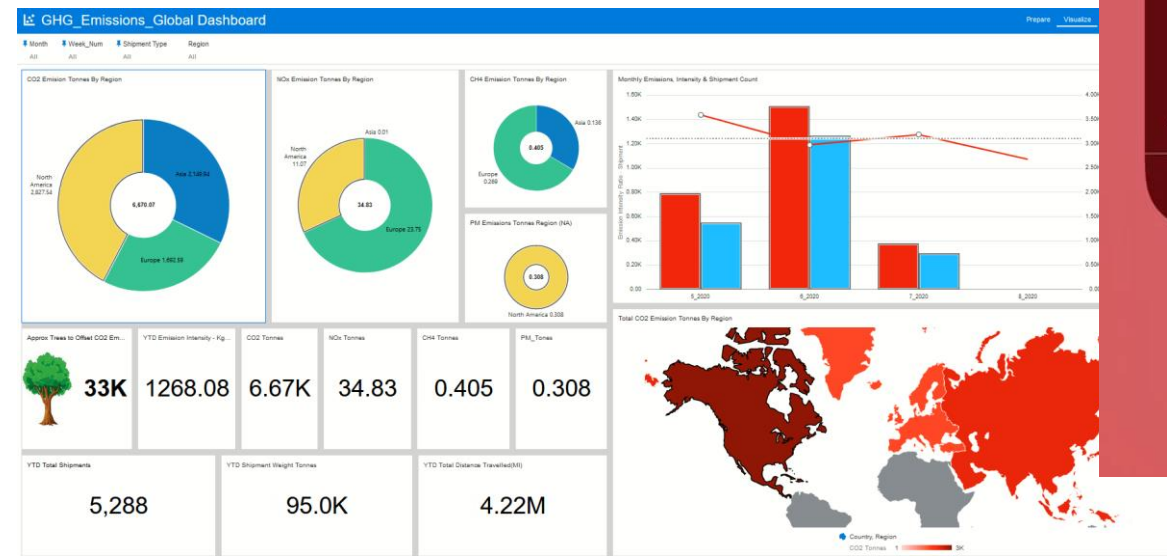
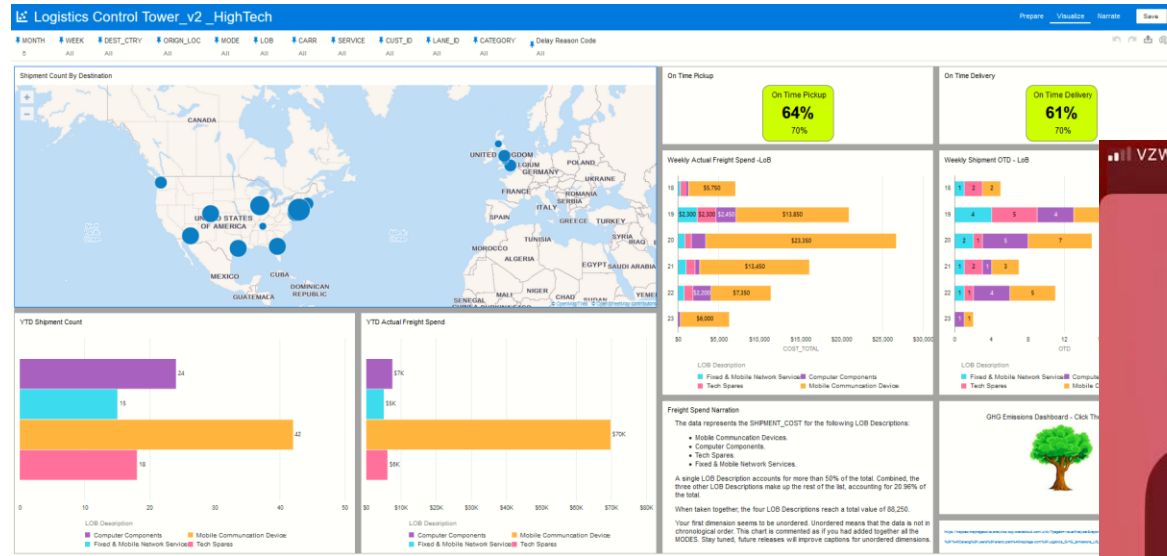
Flexible and Modular Approach:

- Enterprise Analytics
- Integrated Business Planning (IBPx) Control Tower
- Logistics Control Tower
- Supply Chain Risk Control Tower



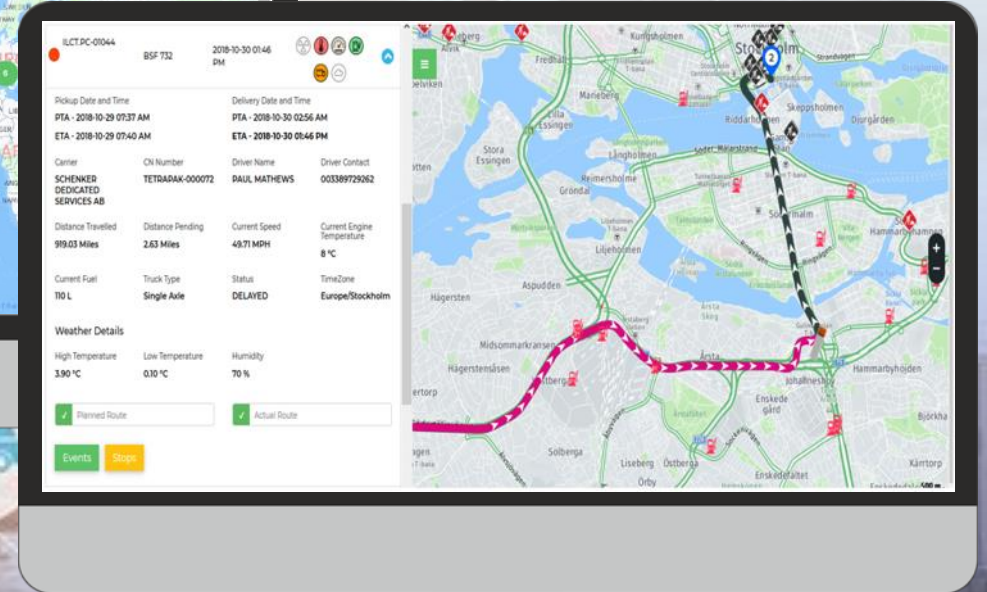
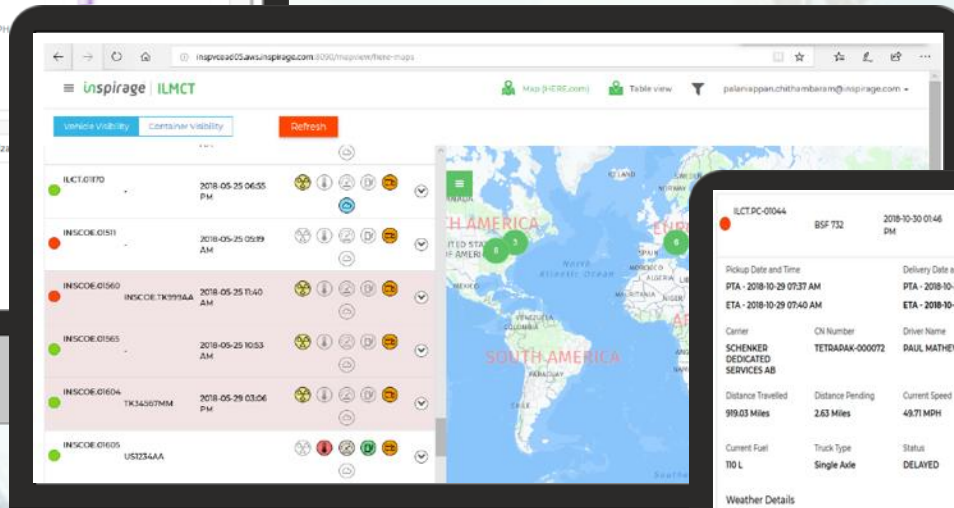
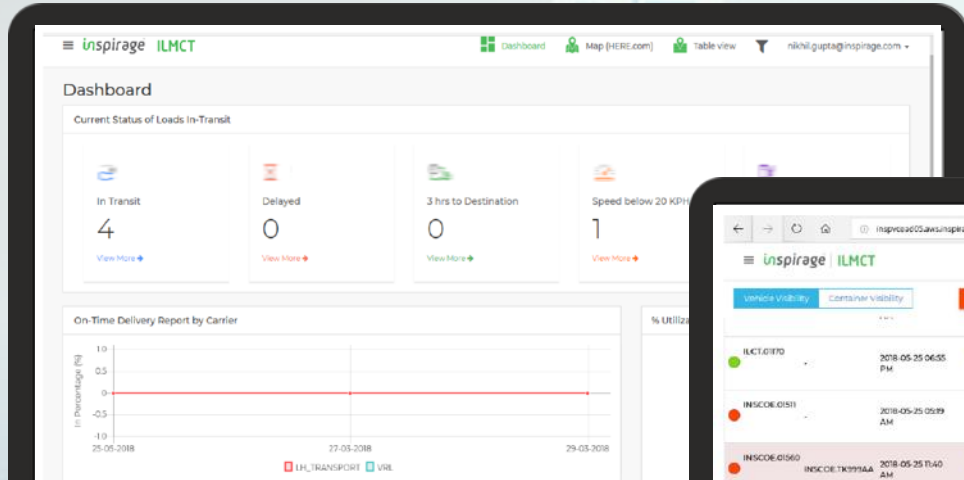
Module: Logistics Control Tower

- Improved Transportation performance measurement capabilities
- Logistics performance management and financial analysis
- Shipment event visibility and impact analysis
- Diagnostic analytics combining logistics and supply chain management data to improve fulfillment and increase customer satisfaction
- Mobile enabled



GLOBAL LOGISTICS CONTROL TOWER

Predictive Visibility



SOLUTION

Apps Deployed

OTM Cloud

Inspirage Solution

MS, MCS

ERP System

SAP

Location Deployed

Global

Arkema Moves to OTM Cloud for Increased Efficiency

Top Objectives and Challenges

Arkema's current transportation management solution on covered half of their transportation flows. They wanted to implement a best-in-class solution with coverage for the full transportation spend across all modes and processes, including inbound, outbound, and carrier connectivity.

Solution

Inspirage was selected to implement the full OTM footprint, including integrations to SAP and carrier connectivity across all geographies. Real-time visibility and powerful digitalization were included in the out of the box solution, which required little customization. Inspirage will provide Managed Services post go-live.



Global chemicals and specialty materials company

Industry: Industrial Manufacturing

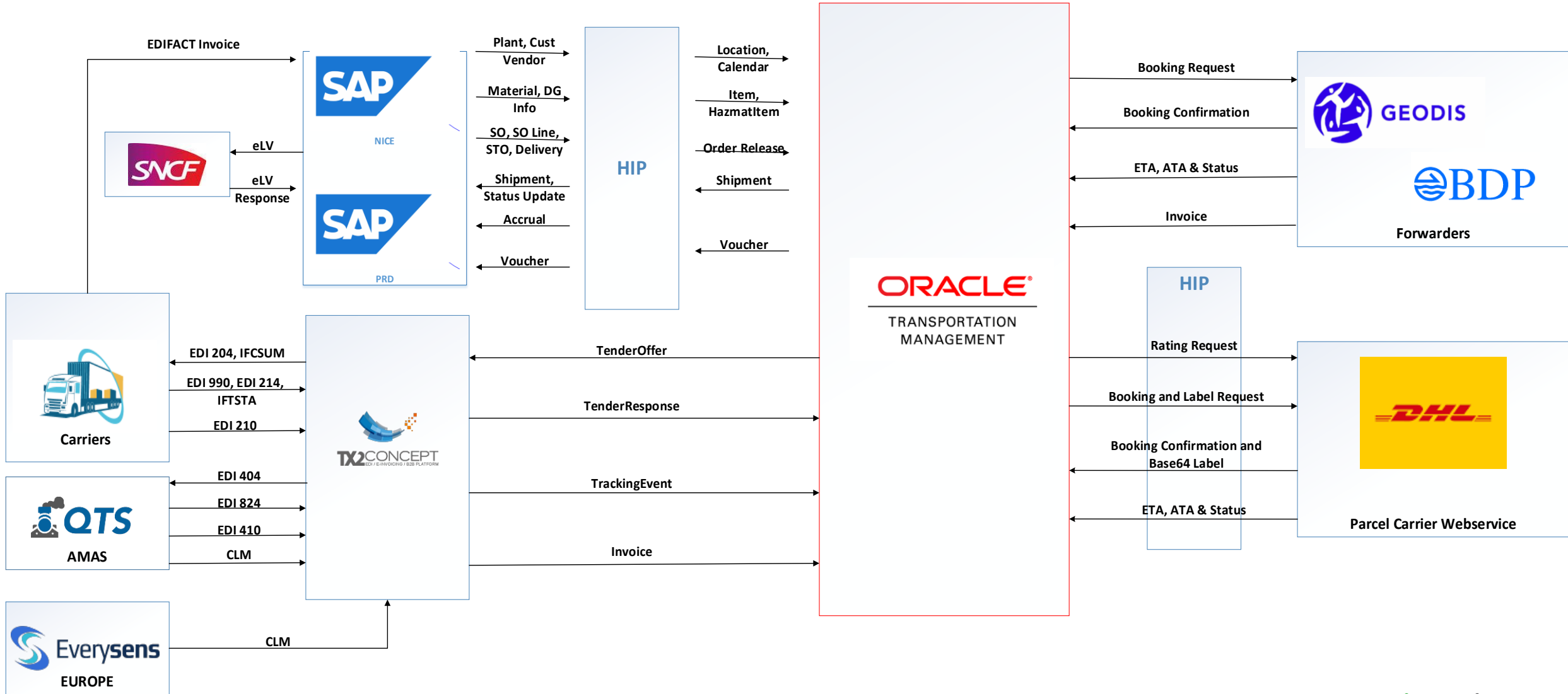
Revenue: \$9.3B

Website: arkema.com

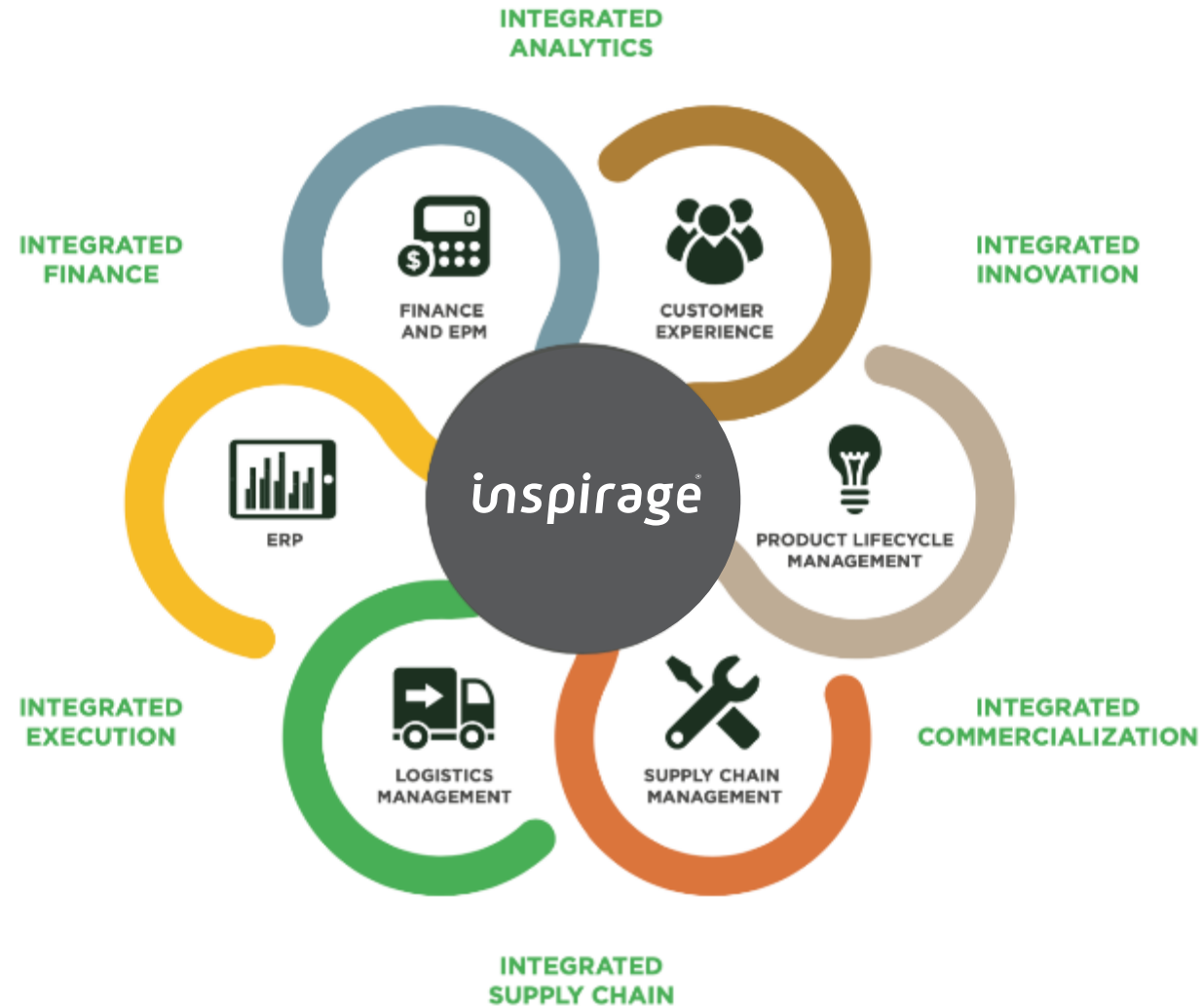
RESULTS

- End-to-end process management of global transportation operations, both outbound and inbound
- Consolidation of TMS functionalities and continuous process improvements
- Improvement of process control with tracking and alerts

Solution Footprint – Currently Live



DIGITALLY ENABLING THE INTEGRATED ENTERPRISE



Integrate Information | Accelerate Innovation | Deliver Operational Excellence



inspirage ∴ **DANKE**